



[support@pivottraderpro.com](mailto:support@pivottraderpro.com)

## **Disclaimer and Risk Warnings**

Trading any financial market involves risk. The content of this e-book, its various associated websites and all related correspondence are neither a solicitation nor an offer to purchase or sell any financial instrument.

Although every attempt has been made to assure accuracy, we do not give any express or implied warranty as to its accuracy. We do not accept any liability for error or omission. Examples are provided for illustrative and educational purposes only and should not be construed as investment advice or strategy.

No representation is being made that any account or trader will or is likely to achieve profits or losses similar to those discussed in this e-book. Past performance is not indicative of future results.

By purchasing the software, subscribing to our mailing list or using the website you will be deemed to have accepted these terms in full.

The Pivot Trader PRO Team, their representatives and associates do not and cannot give investment advice.

We endeavor to ensure that related websites are available 24 hours per day but we cannot be held liable if, for any reason, a site is unavailable.

The information provided in this e-book is not intended for distribution to, or for use by, any person or entity in any jurisdiction or country where such distribution or use would be contrary to law or regulation or which would subject us to any registration requirement within such jurisdiction or country.

There are numerous factors related to the market in general and to the implementation of any specific trading program, which cannot be fully accounted for in the future of performance results, all of which can adversely affect actual trading results.

We reserve the right to change these terms and conditions without notice. You can check for updates to this disclaimer at any time without notification.

The content of this e-book and all related websites and correspondence are copyright and may not be copied or reproduced.

## ***U.S. Government Required Disclaimer***

Commodity Futures Trading Commission Futures and Options trading has large potential rewards, but also large potential risk. You must be aware of the risks and be willing to accept them in order to invest in the FOREX, futures and options markets. The past performance of any trading system or methodology is not necessarily indicative of future results.

**Please read the following information before installing Pivot Trader PRO**

### **Windows Recommendations If Not Using A VPS**

- Make sure your system is clean and running smoothly.
- Do not run unnecessary software that may require more system resources.
- Do not play music, movie, or games while running the software for best performance.
- Some anti-virus or firewalls can block or slow down Meta trader operation, please make sure they are not interfering.
- Make sure you have a good internet connection.
- If running Windows 7 or Vista run Meta trader with Administrator privileges or with UAC disabled. Right click Meta trader then click Run As Administrator.

Feel free to use a VPS or virtual private server for most reliable operation of this software. Recommendations are in member's area and below.

### **RECOMMENDATIONS**

You will need a few items before installing Pivot Trader PRO

- Pick a Forex broker... I have a few recommendations in members' area.
- Install Meta Trader 4 (provided by your broker free).
- Use a VPS (virtual computer). A recommendation, not urgent to utilize.

**Forex Broker for US Traders:** [Click Here To Sign Up](#)

**Forex Broker for International Traders:** [Click Here To Sign Up](#)

**Recommended reliable VPS service:** [Click Here for VPS](#)

**Install Services (Have someone install Pivot Trader PRO):** [Click Here](#)

### **TRADE FREQUENCY**

On average Pivot Trader PRO will trade about 250 to 300 times per year. It does not trade everyday.

## Activating Your Copy Of Pivot Trader PRO

**You will need to activate your copy of Pivot Trader PRO in members' area.**

You can click the activation link in members' area for the trade copier. Or you can click the following link: [Activate your license](#)

Enter your e-mail address used during purchase, your receipt and your Meta Trader 4 Account Login Number provided by your broker.

Then click Activate Your License.

If everything is correct there will be a confirmation note and there **will be an ID number for you there.**

Please note this ID number as you will need to enter it in the ID setting of Pivot Trader PRO during setup.

**You can change your account anytime using this tool, its 1 account per license at a time.**

## RISK MANAGEMENT

**Leverage Recommendations:** Any leverage is fine. But of course if you use lower leverage, then aim for lower risk settings.

**Setup Proper Risk:** Below it will be explained how to get to Inputs. While in Inputs section, scroll down and look for **CustomLotsMode** then double click the input area on the right of it and select **Percent from Balance**. Next, below it look for Maximum Risk, and change that setting to any number between 3 to 6. You can of course choose a different number, but those are the risk ranges I recommend. Also, if the lot size you find is too low, simply increase the number.

If you prefer to pick your own lot size, you can change **CustomLotsMode** to **Fixed Lots** then input the lot size you want in **CustomLotSize** setting below it. I recommend using percent from balance above.

## PAIR SUFFIX

If your pairs on your Meta Trader 4 have a Suffix, for example, when you open the EURUSD chart, it may say on the top left, **EURUSDecn,H1** or **EURUSDx,H1**. If it has something like shown, ecn, or x, or any other letters, then you will need to put this in the PairSuffix input setting.

For example, if it is EURUSDecn, you need to put ecn in PairSuffix setting, this will allow the system to trade properly.

## ENABLE MARKET STATUS

This isn't a major issue, but I recommend setting **EnableMarketStatus** setting to FALSE in inputs. It will prevent the EA from turning off if it thinks market is closed.

## CURRENCY PAIRS

Pivot Trader PRO trades on 6 currency pairs, but DO NOT place Pivot Trader PRO on 6 pairs. It will automatically trade ALL pairs for you. It must only be on 1 pair to trade properly. Details are on the following pages.

## **INSTALLATION**

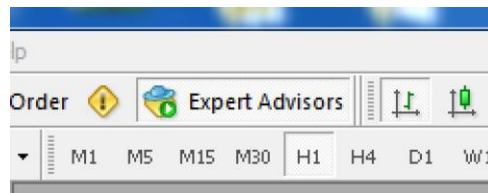
1. Click the Pivot Trader PRO install icon. You may need to right click it and click Run As Administrator.
2. Click the Next > button.
3. Please read the terms and conditions, click I accept, then click Next >
4. Click Browse, then select the folder that your Meta Trader 4 copy is installed in. Most copies are found in Program Files under C:\ drive. But in some occasions it may be installed to your C:\ drive only, then click Next >.
5. Click Next >.
6. If you do not have VC++ 2010 SP1 Redistributable installed, then please leave it checked or check it if unchecked, and click Next. If unsure, simply let it install.
7. Next click Install.
8. Click Next >.
9. Click Finish and Meta Trader will open.

Once Meta Trader 4 opens, look on the left for Market Watch. It will show a listing of Pairs. Right click it and click SHOW ALL.

Next, locate EURUSD only, and right click it, then click Chart Window. You should then see a chart on your screen that looks like this. No need to touch the timeframe on the top. **DO NOT PUT IT ON ANY OTHER PAIRS IF YOU DO YOU WILL GET DUPLICATE TRADES.**



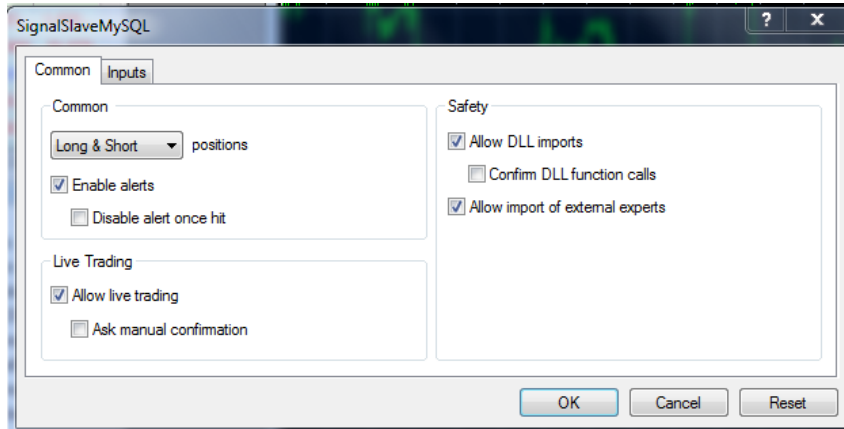
Make sure the Expert Advisors (Automated Trading) button on the top of the screen is pressed in and green. If not, then click it.



On the left side below Market Watch, look for Navigator window. Click the ( + ) sign next to the Expert Advisors text.

Drag Pivot Trader PRO to the EURUSD chart.

After dragging the software to the chart the following box will appear showing the Common tab, make sure all the checks match the box shown below, if not, please check them so they do match, next click Inputs, then go to the next page:





## Once you have clicked Input, there will be many settings you can adjust.

For almost all of the settings, default is HIGHLY recommended, please don't forget to change ID using the number provided on the activation page. Please refer to risk management on previous page to set proper risk settings.

An explanation for some of the settings are below. If not mentioned it is recommended to not change the setting unless experienced.

**ID** – When you activate your license in members area you will be provided an ID number, please enter that number in this field.

**Slippage** – Maximum slippage you allow for opening and closing of orders. Slippage is calculated as 4\_digit pip value. If your broker is 5 digits the Slippage will be converted automatically. For example if you enter 3 it will convert to 30 for 5 digits.

**PairSuffix** – If your EURUSD pair has a suffix , like this... EURUSD.xp or EURUSDx you will need to put that suffix in PairSuffix setting. For example : .xp or x

**Setting Your Risk / Lot Size** – Refer to Risk Management discussion on previous pages on how to set risk and/or lot size. It is urgent you follow those directions.

**ONCE COMPLETE CLICK OKAY  
THEN INFORMATION WILL POP UP  
ON THE CHART AND IT WILL  
AUTOMATICALLY TRADE.**